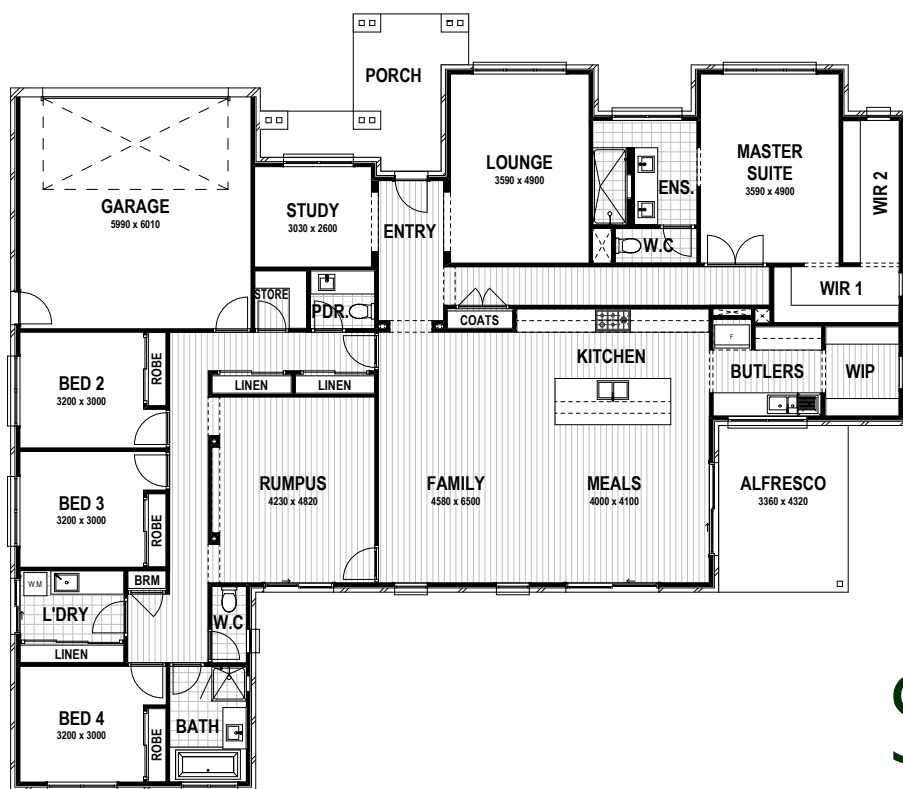




### FEATURES & INCLUSIONS

- Colorbond Roof with Sarking
- Developer Requirements incl. 10,000L Water Tank as per CFA requirements & additional 3,000L Water Tank Plumbed to Toilets
- Stone Benchtops Throughout
- 2700mm High Ceilings Throughout
- 7-Star Energy Rating
- Double Glazed Windows & Sliding Doors
- Site Cost Allowance Included
- Remote to front Panel Lift Garage Door with 3 Handsets
- Tiled Showerbases to Ensuite & Bathroom
- Laminate Timber Look Flooring to Kitchen, Butlers, WIP, Entry, Family, Meals, Rumpus, Store & Hall
- Carpet to Bedrooms, Study, Lounge & Robes
- Double Basin to Ensuite
- 2340mm High Internal Doors
- Hamptons Facade Upgrade (as shown)
- Conventional Raft Slab Construction with Concrete Floor Poured to Alfresco & Porch
- 450mm Eaves to Dwelling & Garage
- Niches in Showers to Ensuite & Bathroom
- Refrigerated Heating & Cooling
- Electrical & Plumbing Fixtures Upgrade Allowance Included
- Butlers Pantry with Sink
- Customisable Floor Plan & Facade



Ambrosia  
KYNETON

\$1,329,050



ALLOTMENT SIZE 2008sqm

HOUSE SIZE 36.23SQ

**Contact:**

**Rhys Molden**

**0432 032 345**

**Rhys@quantumhomes.com.au**

**QUANTUM HOMES (AUST) PTY. LTD.**

9 Willowbank Road, Gisborne, 3437, Vic.

Office: (03) 9363 8000

Email: [info@quantumhomes.com.au](mailto:info@quantumhomes.com.au)

[www.quantumhomes.com.au](http://www.quantumhomes.com.au)