

HOUSE & LAND PACKAGE

BY QUANTUM HOMES

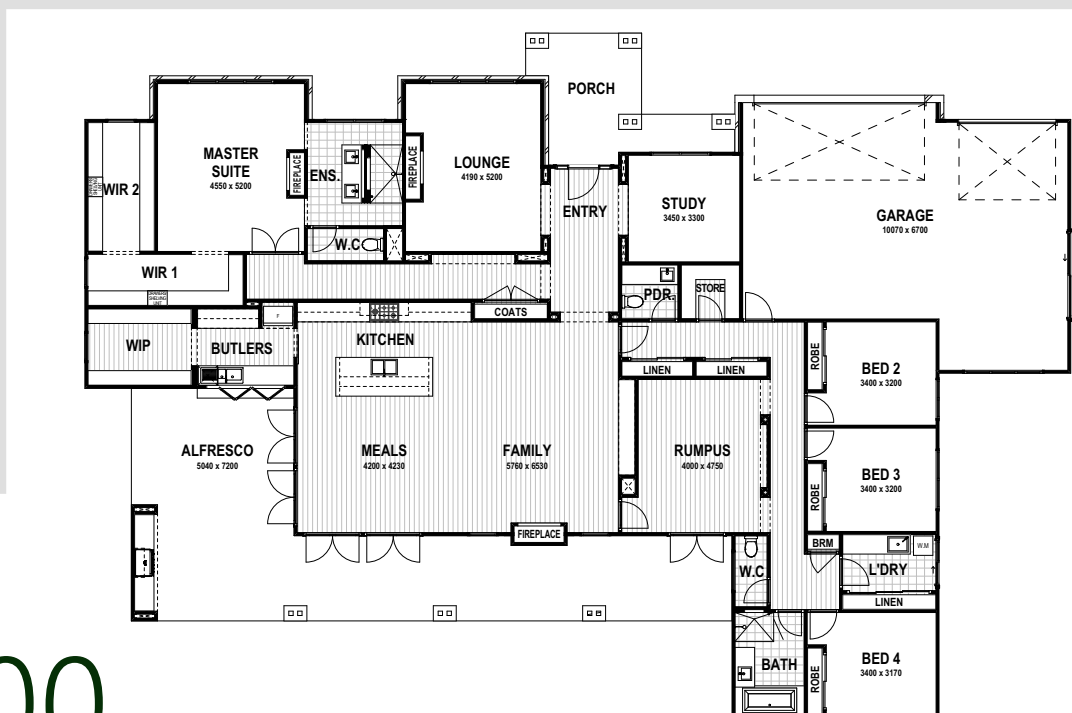
PANORAMA 51.53

- AS DISPLAYED

LOT 11 EVERGLOW DRIVE, KYNETON

FEATURES & INCLUSIONS

- All Features & Inclusions as per Quantum Homes Display Home
- Colorbond Roof with Sarking
- Developer Requirements incl. 10,000L Water Tank as per CFA requirements & additional 3,000L Water Tank Plumbed to Toilets
- Stone Benchtops Throughout
- 2700mm High Ceilings Throughout with Raised Ceilings to Entry, Lounge, Study & Master Suite
- 7-Star Energy Rating
- Double Glazed Windows & Sliding Doors
- Site Cost Allowance Included
- BBQ & Cabinetry to Alfresco
- Tiled Showerbases to Ensuite & Bathroom
- Laminate Timber Look Flooring to Kitchen, Butlers, WIP, Entry, Family, Meals, Rumpus, Store & Hall
- Carpet to Bedrooms, Study, Lounge & Robes
- Double Basin to Ensuite
- 2340mm High Internal Doors
- Hamptons Facade Upgrade (as displayed)
- Two-Pack Shaker Cabinetry throughout with Feature Rangehood as per Display Home
- Stone Servery Bench to Alfresco/ Butlers
- Niches in Showers to Ensuite & Bathroom
- Refrigerated Heating & Cooling
- Electrical & Plumbing Fixtures Upgrade Allowance Included
- Fireplaces to Master, Lounge & Family with Feature stone or Mantel
- TV Unit Cabinetry to Family with Stone Top
- Remote to front Panel Lift Garage Door with 3 Handsets
- Conventional Raft Slab Construction with Concrete Floor Poured to Alfresco & Porch
- 450mm Eaves to Dwelling & Garage
- Butlers Pantry with Sink
- Customisable Floor Plan & Facade



Display Home on Show at:
9 Willowbank Road, Gisborne
Wed - Sun
9am - 5pm

Ambrosia
KYNETON

\$1,899,000



ALLOTMENT SIZE 3004sqm

HOUSE SIZE 51.53SQ

Contact:

Rhys Molden

0432 032 345

Rhys@quantumhomes.com.au

QUANTUM HOMES (AUST) PTY. LTD.

9 Willowbank Road, Gisborne, 3437, Vic.

Office: (03) 9363 8000

Email: info@quantumhomes.com.au

www.quantumhomes.com.au